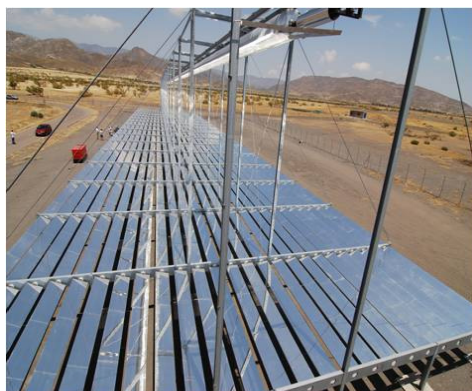


## Flat Solar Mirrors for Concentrating Solar Power (CSP)



**Power Tower**



**Linear Fresnel**



**Dish Stirling**

This product information is based on **FLABEG** specification for solar mirrors.

### Glass Quality

**Low-iron float glass**

### Available Dimensions <sup>\*)</sup>

<b>max. Dimension</b>	3300,0 x 2500,0 mm
-----------------------	--------------------

<sup>\*)</sup> other dimensions on request

**Available Thickness: 1 – 6 mm**

### Energy Reflection <sup>\*)</sup>

Thickness <sup>**)</sup>	Reflection <sup>1)</sup>	Reflection <sup>2)</sup>
4 mm	≥ 93,0 %	≥ 92,3 %

<sup>\*)</sup> in average, according to ISO 9050

<sup>\*\*)</sup> Tolerance ± 0,2 mm; other thicknesses on request

<sup>1)</sup> low lead coating system

<sup>2)</sup> Lead free coating system

### Edge treatment

F-edge: single-sided seamed

### Quality testing

- Resistance to humidity as per DIN EN ISO 6270-2 CH: 480 h
- Resistance to salt spray test DIN EN ISO 9227 NSS: 480 h
- Resistance to CASS test DIN EN ISO 9227 CASS: 120 h
- Stability in climatic cycling test  
4 h: + 90 °C; 4 h: -40 °C;  
16 h: DIN EN ISO 6270-2 CH: 10 cycles